

■ Hip wash, front wash, automatic wash, dry operation page



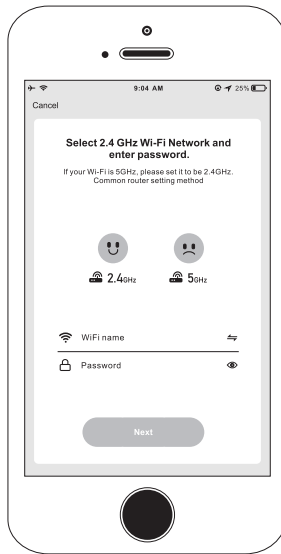
1. On this page, you can adjust the water temperature, wind temperature, nozzle position, water pressure intensity.
2. Press stop button, Can immediately end wash or dry.

Operating procedures

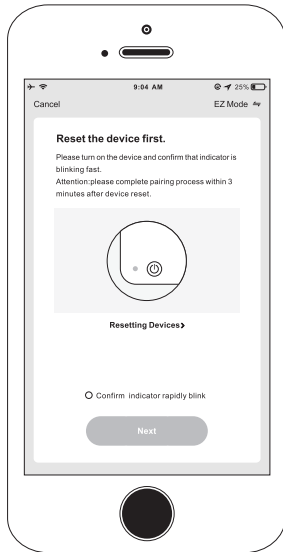
■ WIFI and device adding operation process



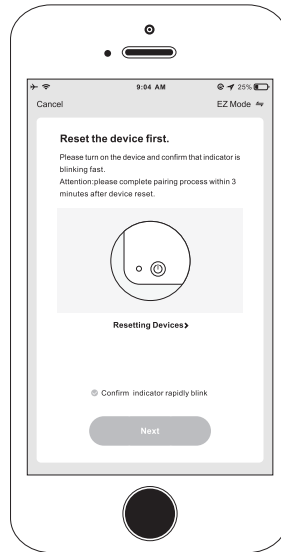
1. Click “+” in the upper right corner to add a device.
2. Click on “Small Home Appliances” in the left catalog.
3. Click on the “Smart Toilet” to enter the online login page.



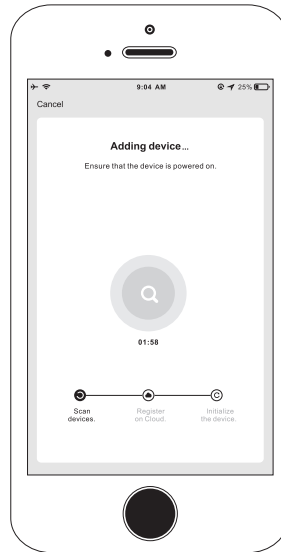
4. Enter WIFI password.



5. Press and hold the “Hip Wash” and “Drying” buttons on the side of the toilet (or turn the knob to “Hip Wash” and press it down) for 5 seconds, until the buzzer of the main unit sounds.

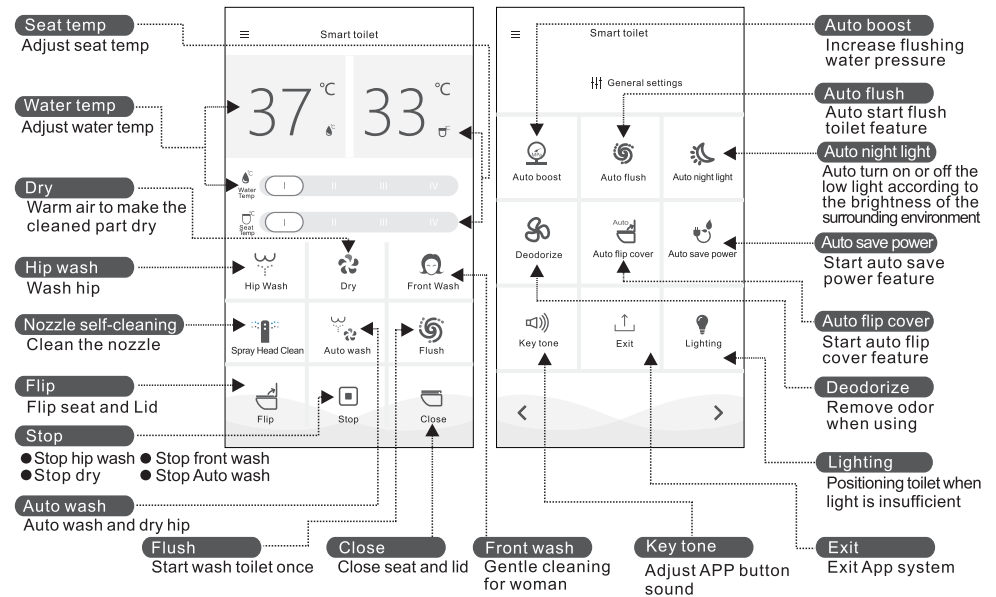


6. Confirm indicator rapidly blink, press Next button.



7. Waiting for networking.

APP Operation part (for reference only)



Attention:

- Due to data transmission and other reasons, after successful networking, the device status on the APP side may display "not connected". Restart the app after clearing the app cache to refresh the status information;
- The WiFi communication function may be turned off due to mobile phone sleep and other reasons, causing the device status to be out of sync or the application offline. At this time, try to restart the APP to repair;
- When networking, you must enter the correct wireless account and password, otherwise it will cause networking failure;
- Networking parameters are automatically memorized, and there is no need to repeat the configuration when the machine is turned on next time;
- The device only receives operations from one account at the same time. When operating with multiple accounts, the connected accounts will be automatically excluded, causing the operation to fail;